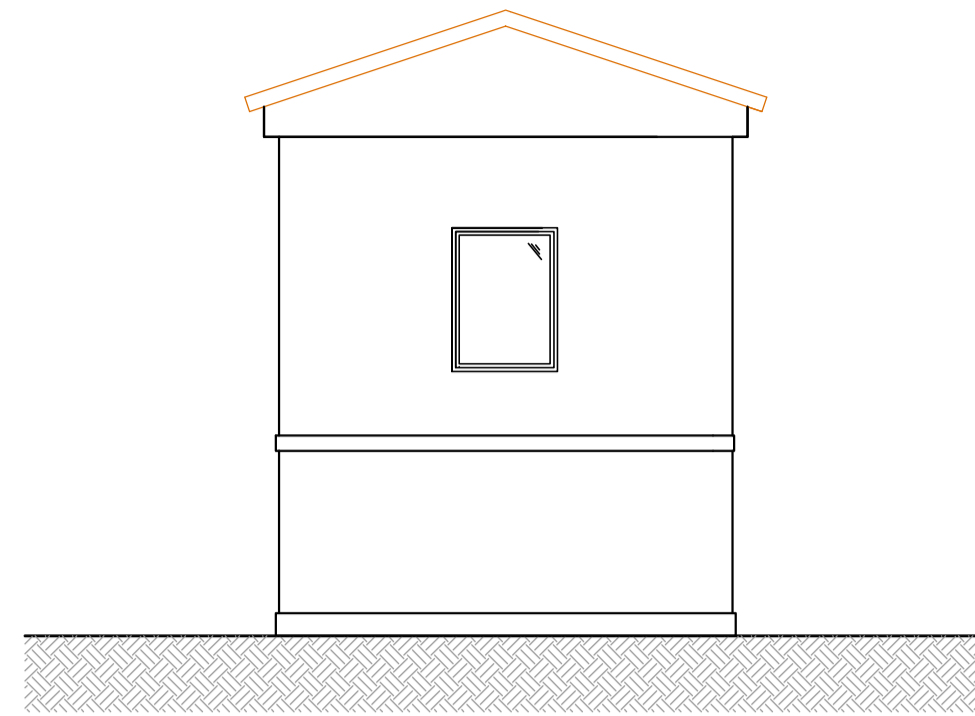
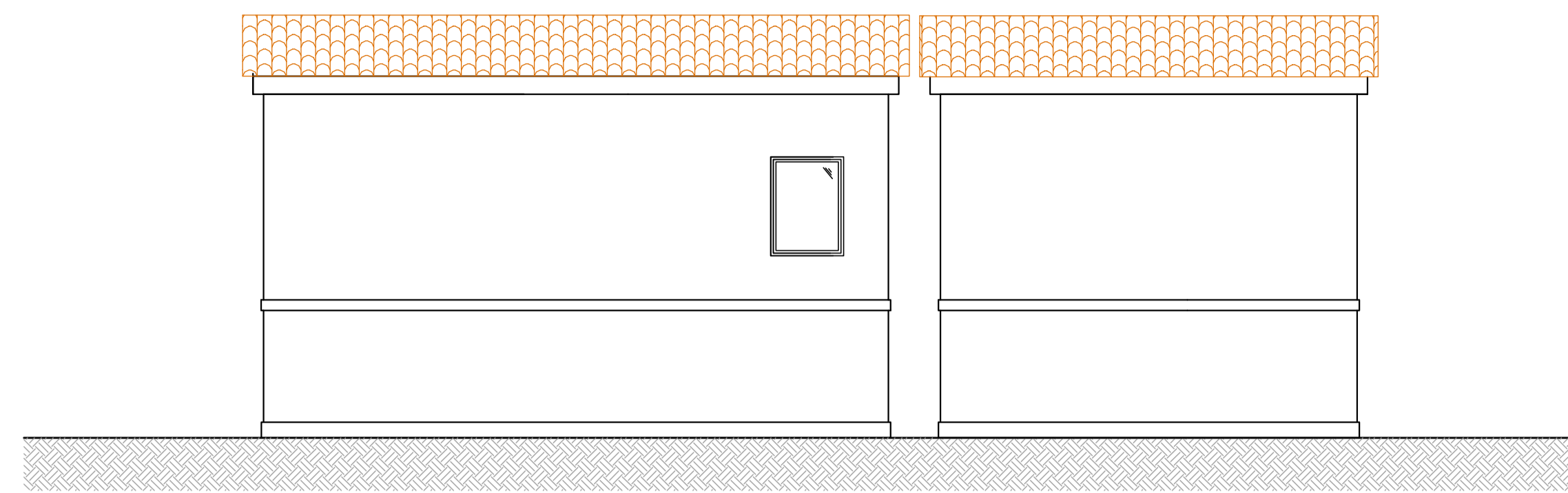


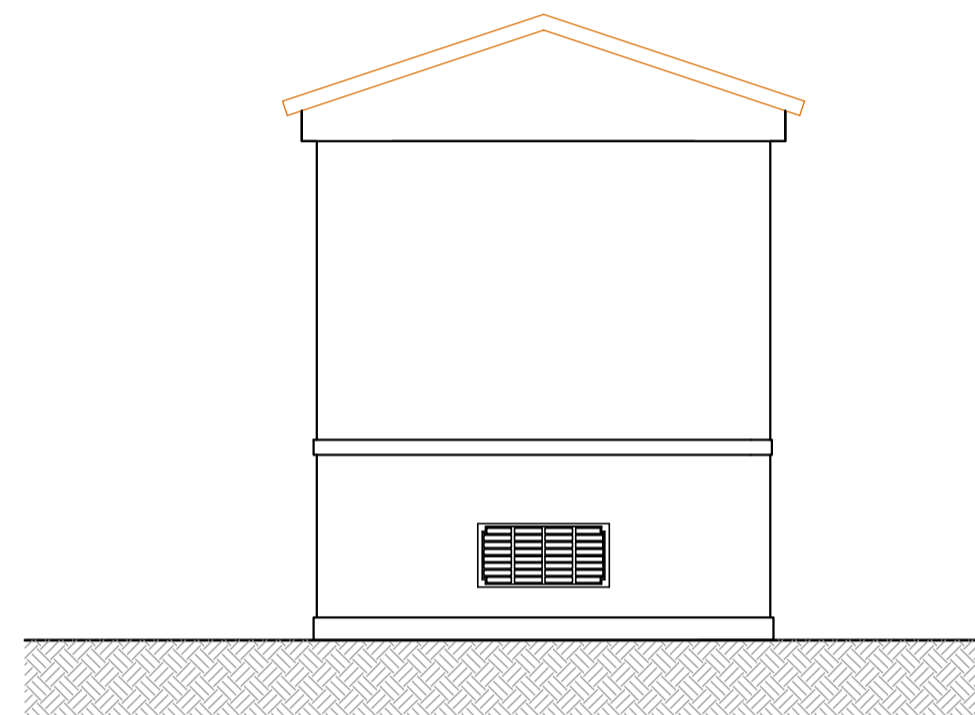
PROSPETTO NORD



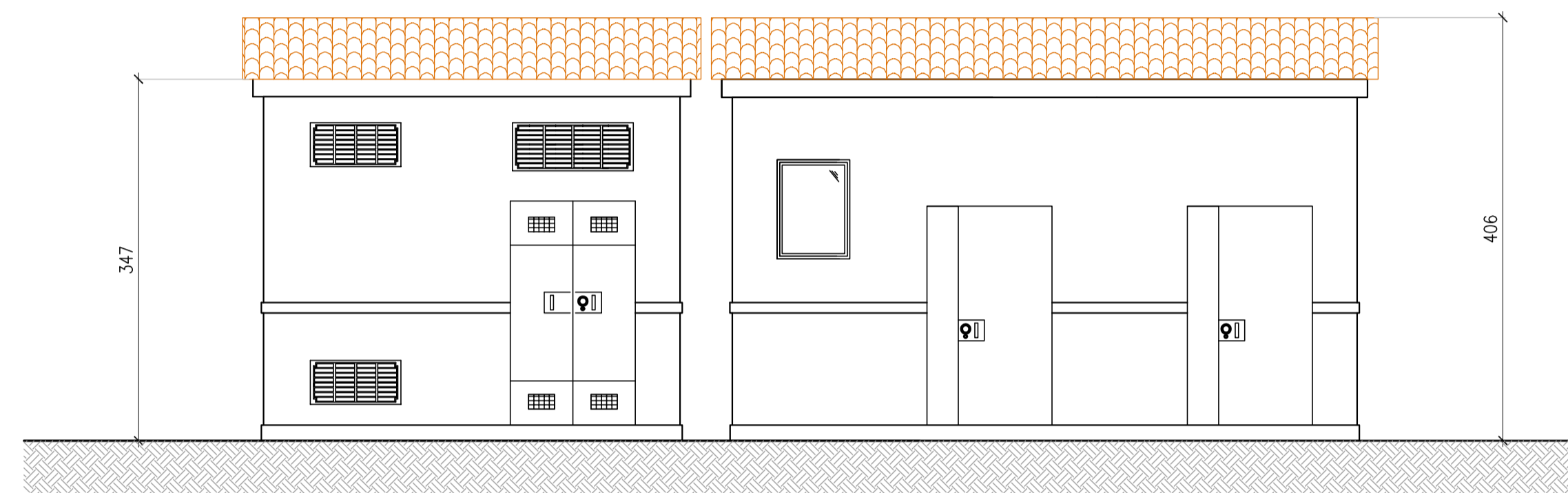
PROSPETTO EST



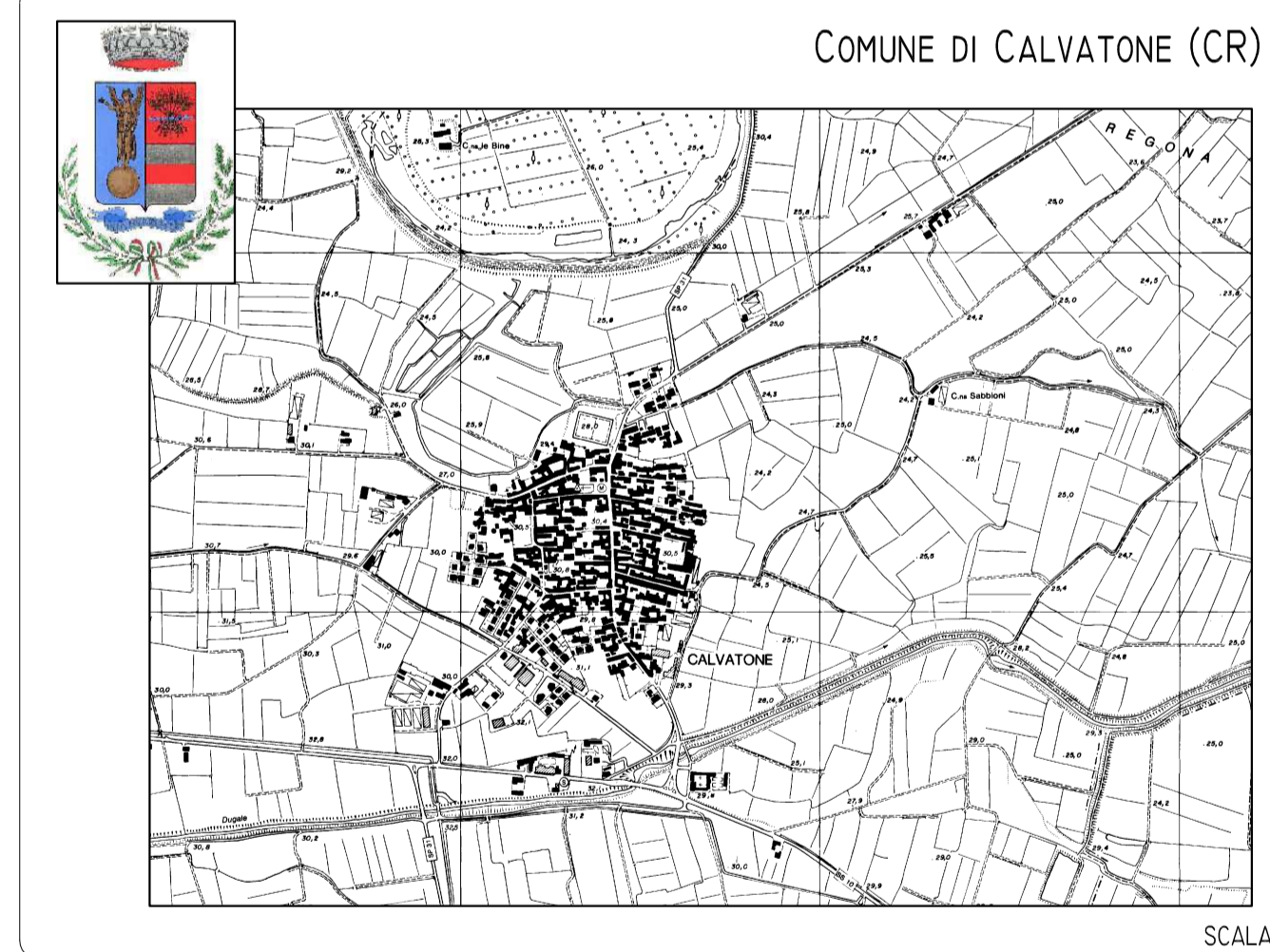
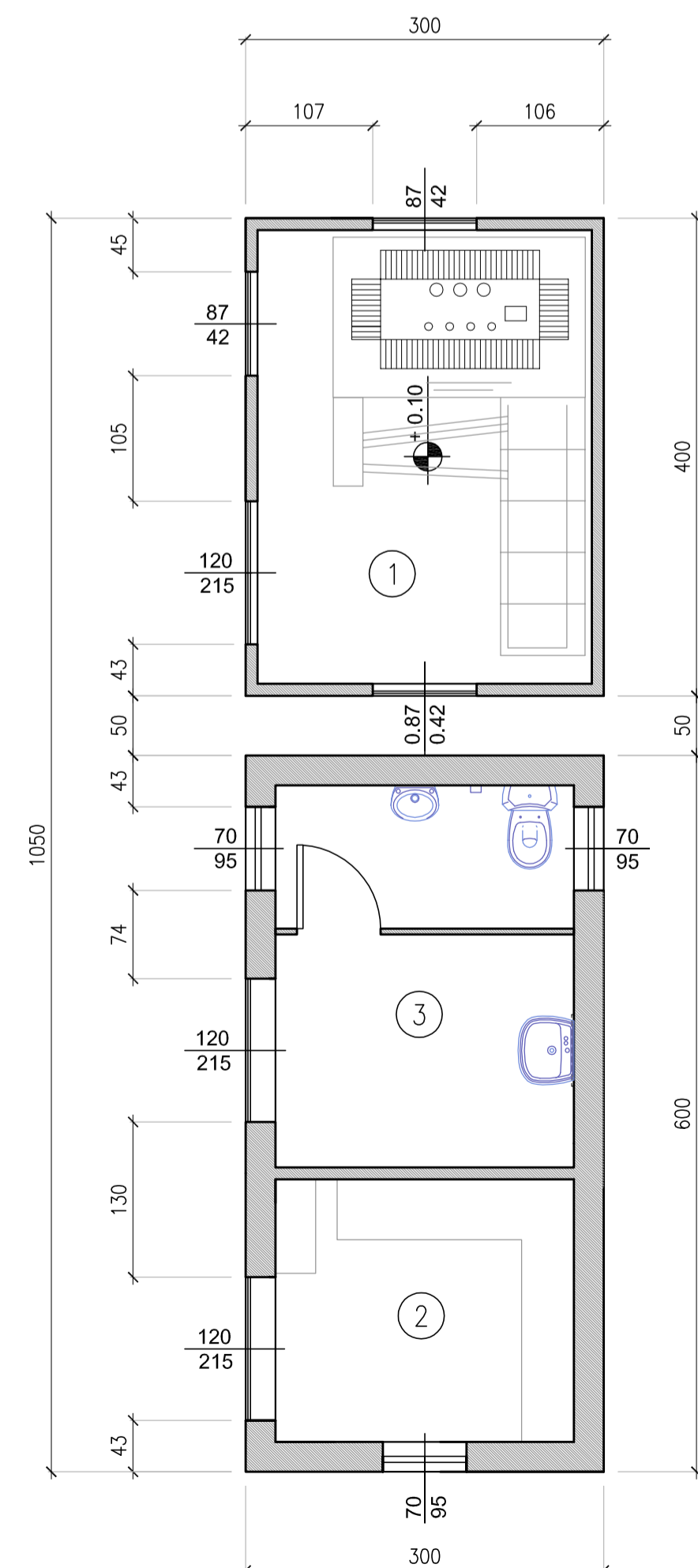
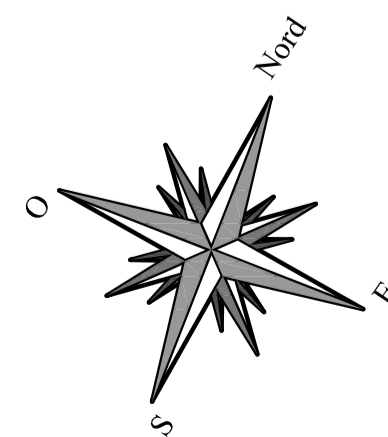
PROSPETTO SUD



PROSPETTO OVEST



POS.	DESCRIZIONE
1	CABINA ENEL
2	QUADRI ELETTRICI
3	SERVIZI IGIENICI



LAVORI DI COSTRUZIONE
DEL DEPURATORE COMUNALE
PROGETTO DEFINITIVO

titolo:

LOCALE
TECNOLOGICO

IL TECNICO

ing. Stefano ALLEGRI
Studio Tecnico Associato ProgettAmbiente
via del Consorzio, 3 - CREMONA - P.IVA 01468580194
Tel. 0372 557895 - Fax 0372 33999 - Cell 340 3916446
stefano.allegri@progettambiente.eu

data: 14 APRILE 2011

scala: 1:50

tavola:

7

COMMITTENTE

COMUNE DI CALVATONE